







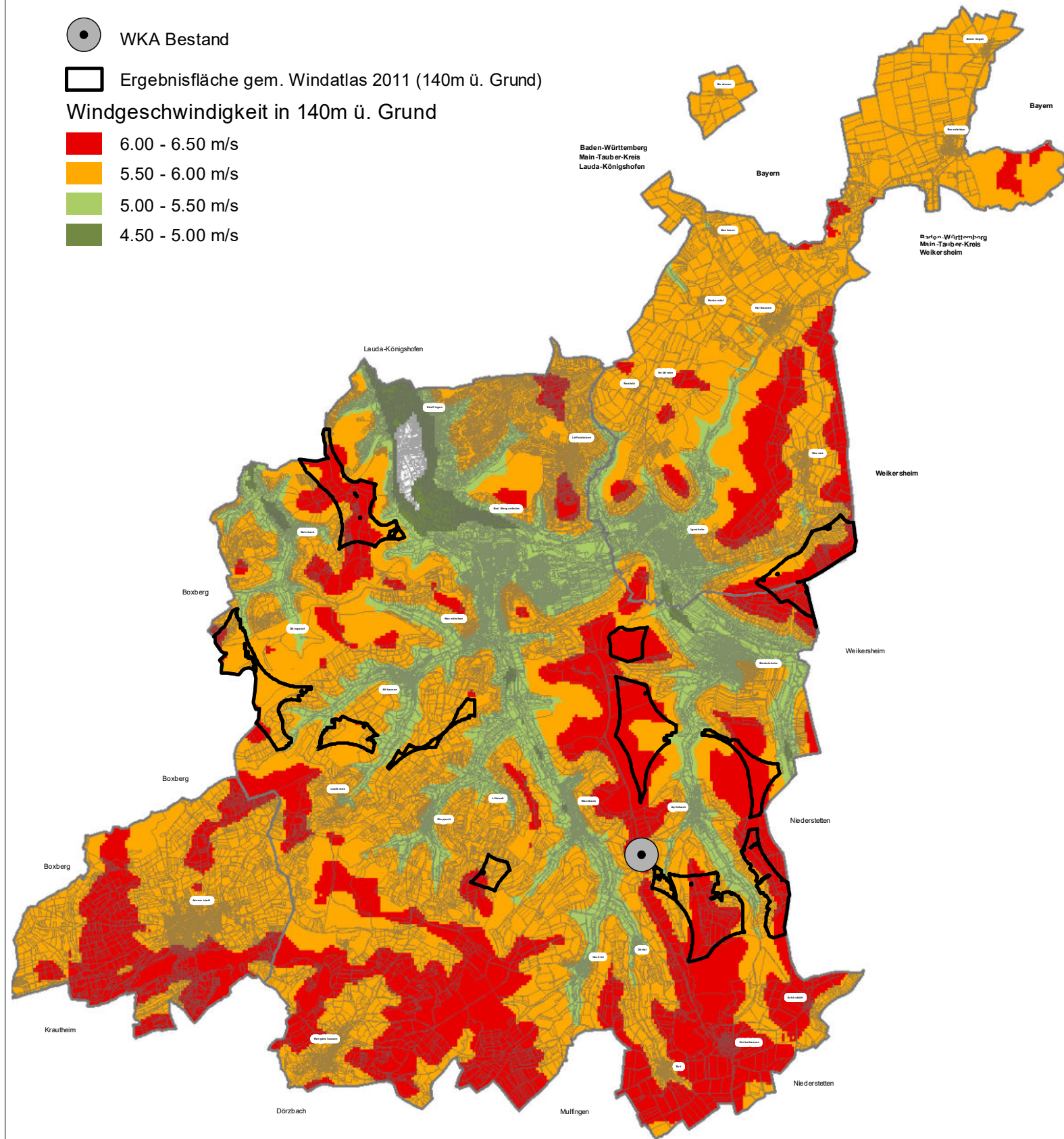
Vergleich des Windatlas 2011 und 2019
Stand: 22.10.2019

Legende

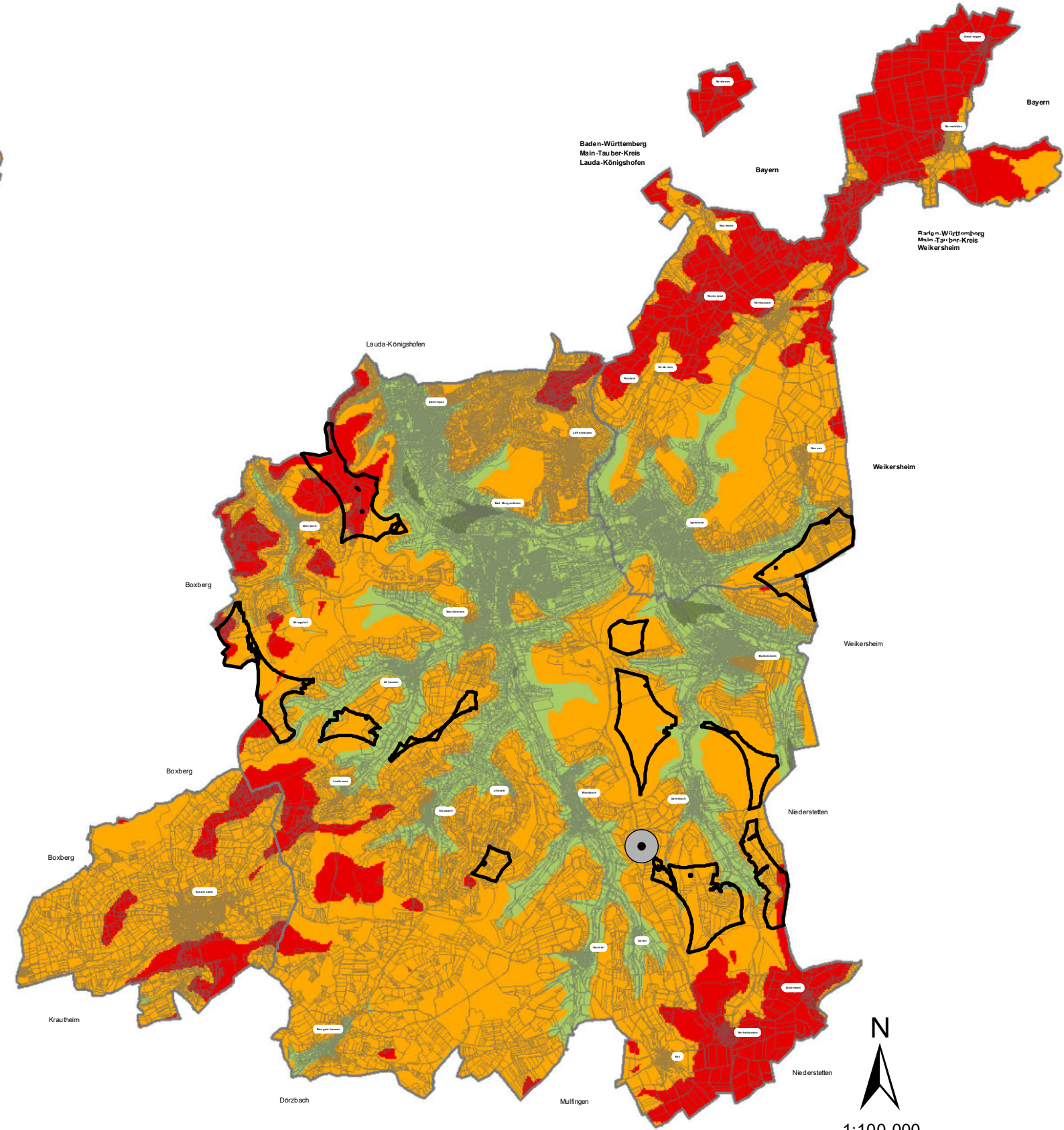
-  WKA Bestand
-  Ergebnisfläche gem. Windatlas 2011 (140m ü. Grund)

Windgeschwindigkeit in 140m ü. Grund

-  6.00 - 6.50 m/s
-  5.50 - 6.00 m/s
-  5.00 - 5.50 m/s
-  4.50 - 5.00 m/s



Windatlas 2011



Windatlas 2019

